

# CERTIFICATE OF LOCATION OF GOVERNMENT CORNER

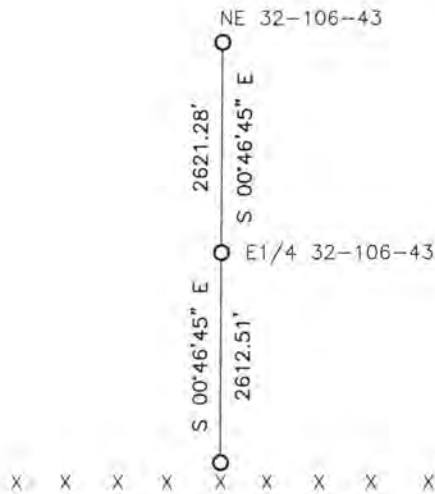
NORTHEAST Corner of Section 5, Township 105, Range 43, 5TH P.M.

STATE OF MINNESOTA, County of MURRAY

At the corner location shown on the sketch:

- On \_\_\_\_\_ found a \_\_\_\_\_  
DATE
- left monument as found,  lowered monument,  removed monument (explain)
- On 6/26/15 placed a 5/8" iron with seal #43844  
DATE

## SKETCH OF REFERENCE TIES



Minnesota State Plane Coordinate  
System Murray County Datum  
NAD83 (1996)  
N: 131997.594  
E: 432320.328

Statement of evidence relative to this corner location is on back of page.

I hereby certify that this document and the data contained herein was prepared by me or under my direct supervision.

[Signature] 3/22/16  
SIGNATURE DATE

Registration No. 43844

- Land Surveyor,  Professional Engineer
- County Surveyor,  County Engineer

OFFICE OF THE COUNTY RECORDER

County of MURRAY

I hereby certify that this document was filed in the Co. Recorders office at 11:00A.M on the 18<sup>th</sup> day of OCTOBER A.D. 20 16

County Recorder Evelyn C. Larson

By \_\_\_\_\_, Deputy

DOCUMENT NO. \_\_\_\_\_

## Statement of Evidence

In 1861, J.W. Myers did the original survey of the north line of the township.

On May 27, 1905, J.W. Woolstencroft recorded a stone and buggy spokes at the corner.

On June 26, 2015, Bueltel-Moseng Land Surveying set a 5/8" iron with seal #43844 by projecting line from the northeast corner of Section 32-106-43 through the corner post at the east quarter corner and in line with fence going east and west.